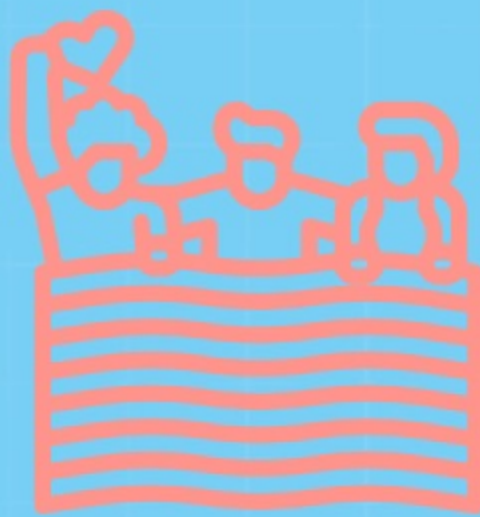


# JUNE 2026

## LINE STATS

### Bidding Reminders + Important dates

- June is a **30** day bid month
- June is Pride Month
- Juneteenth (unpaid holiday) - **6/19**
- Father's Day (unpaid holiday) - **6/21**
- For operational stability, we were told to **expect few, if any, COLA awards for June**, so be sure to bid to cover yourself.



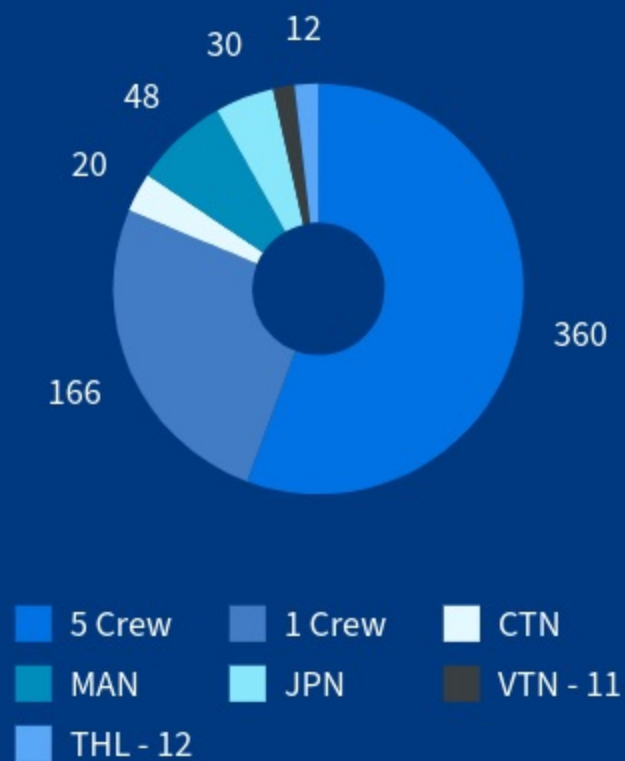
# JUNE 2026

## LINE STATS

### LAX International

#### Destinations & Frequencies

- eHKG / BKK - daily
- LHKG - daily
- LHR - daily
- HND - daily
- NRT - daily
- PVG - daily
- SYD - daily
- MEL - 3x week
- PEK - 3x week



#### INTL Lineholder Stats

- Total: 647 LH (+6)
- Line Avg. of 84:03 (+3:58)
- This is not inclusive of VRL bidding and awards, or move-up lines of flying
- This report represents the primary award statistics ONLY
- MAY26 most junior INTL. non-qual sys. seniority: 8740

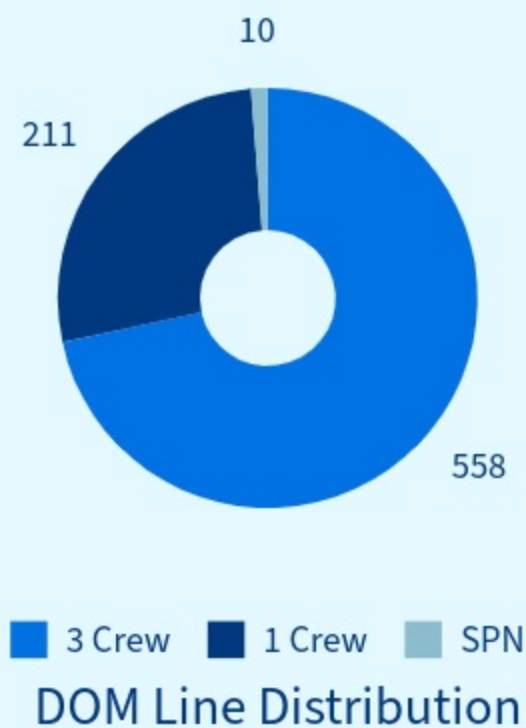
# JUNE 2026

## LINE STATS

### LAX Domestic

#### LAX Base Update

At the beginning of May, your local VP Tim Trueman joined our CSC in Chicago for the monthly DSL meeting with the company. Together, they advocated strongly for our interests, stressing how management's decisions are negatively impacting our lives. While they wouldn't waive the contractual 71 hr minimum so we could build the BKK trips pure, they did agree to run domestic at a much lower line average. This allowed for significantly less mixing in the intl lines, and created more domestic lines with more days off/fewer trips, benefiting domestic lineholders as well. The company also offset higher intl line averages with 16 day off RSV lines for IP and regular FAs.



#### DOM Lineholder Stats

- Total: 779 LH (+28)
- Line Avg. of 75:02 (-6:36)
- This is not inclusive of VRL bidding and awards, or move-up lines of flying
- This report represents the primary award statistics ONLY
- APR26 most junior DOM LH sys. seniority: 26818

# JUNE 2026

## LINE STATS

### LAX base-wide

#### RSV Line Totals

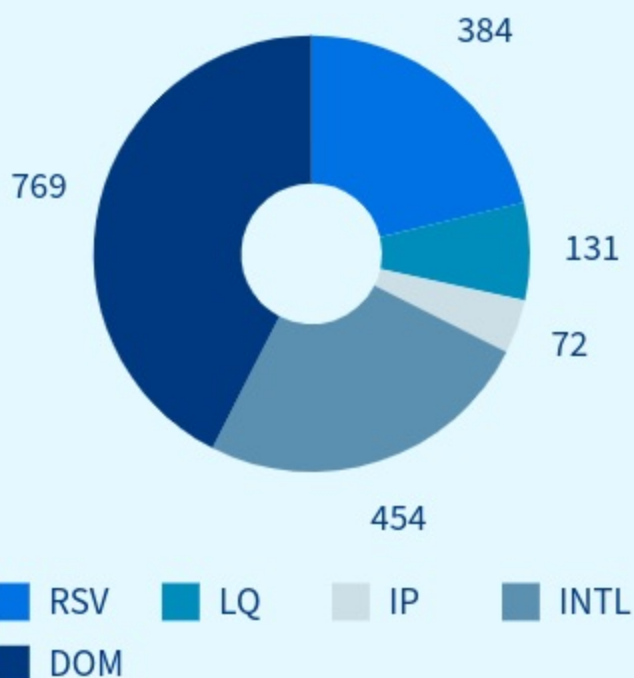
35 Non-Qualified  
 10 IP  
 4 CTN  
 3 JPN  
 5 MAN  
 2 SPN  
 1 THL  
 1 VTN

**FA and IP RSV lines are 16 days off.**  
 all LQ reserve lines are 12 days off.  
 see DSL report on [unitedafa.org](http://unitedafa.org)  
 for more information



#### RSV Population Projections\*

\*please note these RSV population projections are estimates only. Final totals are only available following the bid and award process. These projections are made to account for opt-outs, and for changes in the population of active FAs.



#### Base Stats

- May Special COLA: 55
- May COLA seniority: 11/7/2022
- Expect few, if any, June COLA awards
- MAY26 most junior non-qualified VRL sys. seniority: 19039
- June is a 30 day bid month
- June is Pride Month
- Juneteenth (unpaid holiday) - **6/19**
- Fathers' Day (unpaid holiday) - **6/21**

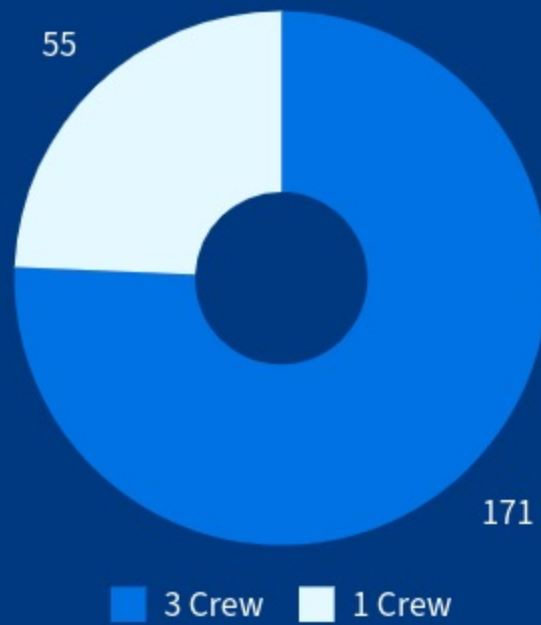
# JUNE 2026

## LINE STATS

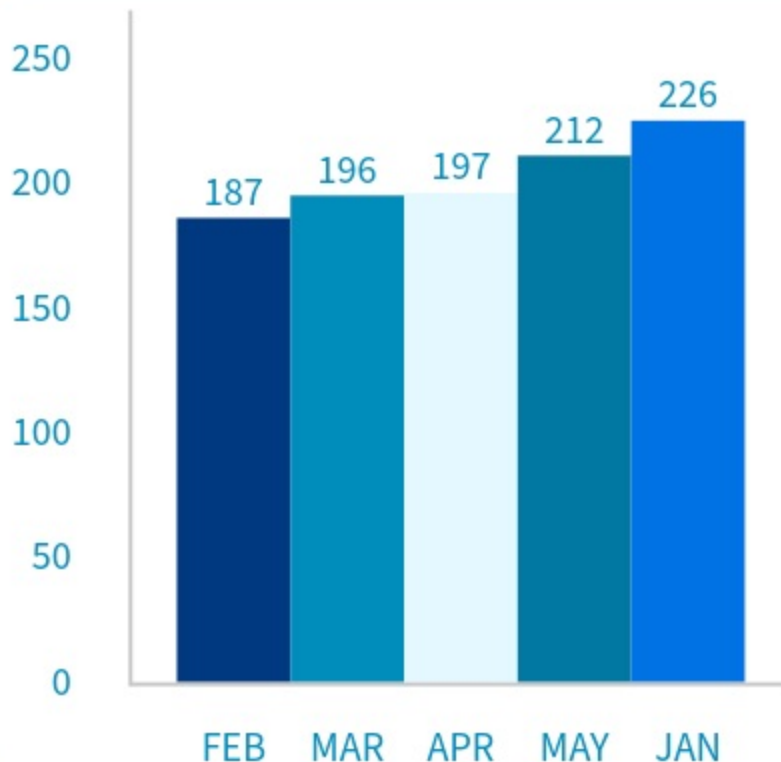
SAN base-wide

### Important Dates & Info

- June is a 30 day bid month
  - June is Pride Month
  - Juneteenth - 6/19
  - Fathers' Day - 6/21
- There are **11 incoming transfers** for June! Welcome to the base and to Council 12!



DOM Line Distribution



### DOM Lineholder Stats

- Total: 226 LH (+14)
- Line Avg. of 82:58 (+1:40)
- This is not inclusive of VRL bidding and awards, or move-up lines of flying
- This report represents the primary award statistics ONLY.
- **11 incoming transfers**
- There are 7 RSV lines in SAN, all with 12 days off.
- May. COLA awarded: 2
- May. COLA seniority date: 5/23/2022